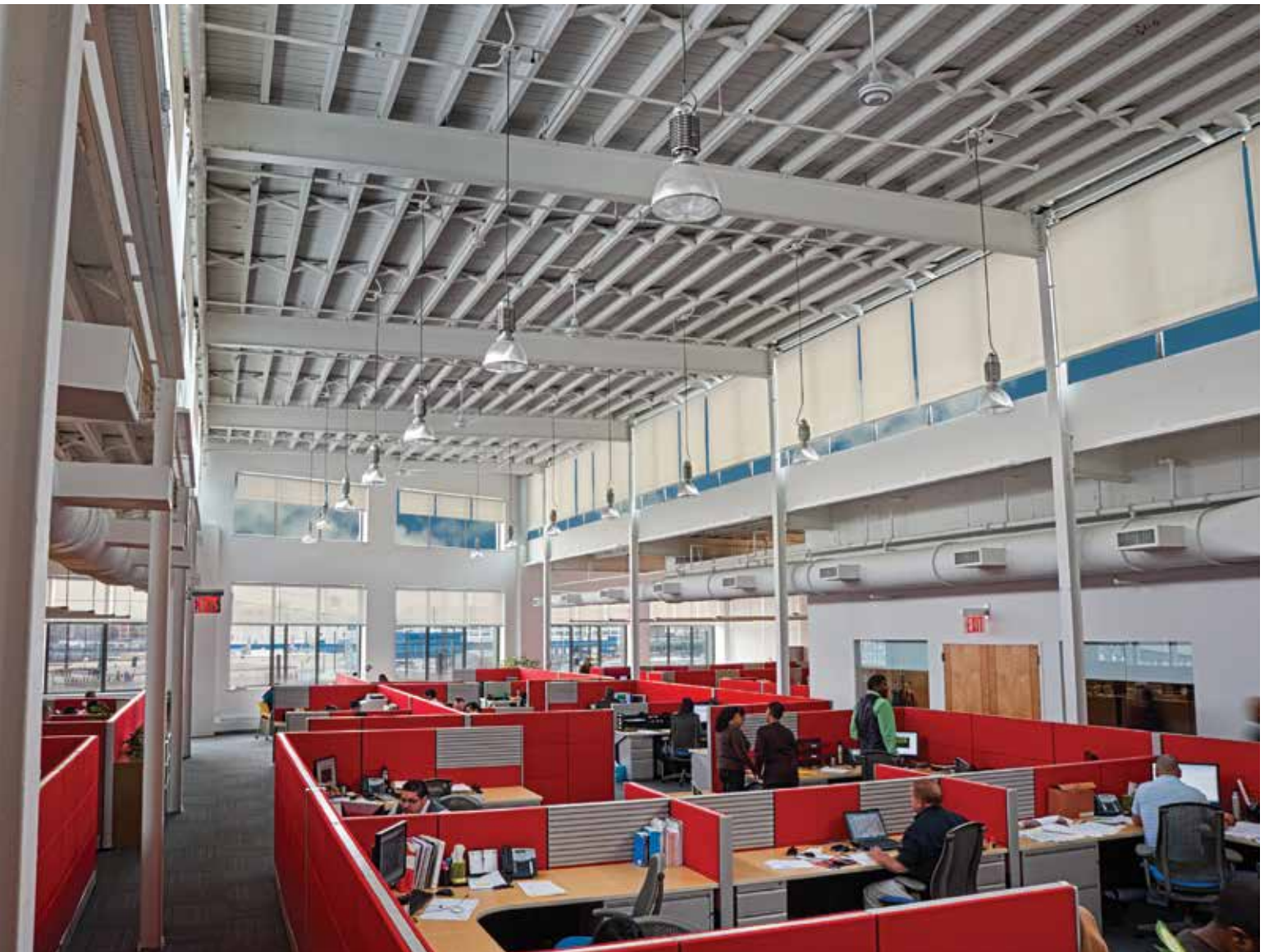


# HISTORY OF MECO



Mecho Headquarters / Long Island City, NY  
Photo / Mecho



## 1960s

**1961-1969** Active as the Homecraft Drapery and Upholstery Company. The company was formed from a small, family-owned drapery and upholstery business founded in 1939 in the Brooklyn borough of New York City.



**1968** Developed the first manual roller-screen shading systems, first installed in Trust Company of Georgia (now SunTrust Banks) by Carson Lundin & Shaw architects.

## 1970s

**1970s** First recognized for its products by those who saw the need for an energy-conserving, window-management system during the energy crisis of 1970s.

**1972** Designed and developed a simple analog, automated, and motorized shading system for IBM in New York. This was the first solar-tracking roller-shade project in the U.S.

**1974** Developed the first roller-screen system for windows as a building standard, and first installed for the Irving Trust Company Building, now known as NY Life.

**1976** The manual MechoShade® system was trademarked and patented as a chain-operated, disk-brake, roller-shade design.

**1977** Created the first programmable, intelligent control system to track the sun for maximum shading effectiveness and efficiency.

**1978** A study with the ASU solar lab created the basis for openness in fabric based on solar heat gain and glare.

## 1980s

**1980** Mecho sun logo developed.

**1986-1988** The Canadian government specifies the ElectroShade® system (a soaring sail-like window covering) for Ottawa's National Gallery by Moshe Sofdie with Parkin Associates.



**1987-1989** Installed motorized ElectroShades in landmark projects such as New York City's Equitable Center (now the AXA Center) by Edward Larrabee Barnes, and Los Angeles's First Interstate Bank Tower (now U.S. Bank Tower) by I.M. Pei.

## 1990s

**1992** Created the first-ever PC/Windows®-based automated window-shade system, now known as SolarTrac®. This system was initially installed in the JCPenney World Headquarters in Plano, Texas by HKS, Inc. architects.

Developed and installed the first intelligent, addressable, and encoded motor program called IMCS in Sears headquarters in Hoffman Estates, Illinois.

**1993-1994** Developed the patented overrunning clutch-brake for the manual MechoShade roller-shade system, currently known as Mecho®/5.

## 2000s



**2004** Introduced EcoVeil®, the world's first Cradle to Cradle certified shade cloth.

Mecho installs newly upgraded Solartrac in NY Times headquarters with new patented features such as brightness and shadow management / overrides.

**2005** Developed and installed Icon motors—the first motor developed internally at Mecho.

## 2010s

**2016** Mecho introduces EcoVeil® Sheer shade cloth that's free of PVC and chemical flame retardants.

**2018** Introduced simply as Mecho, which reflects the company's current product offerings, systems, and innovations moving forward. Mecho is currently headquartered in Long Island City, New York, and is the hub for engineering innovation and product development.

50 YEARS OF  
INNOVATION

Mecho® has been a trusted partner in the evolution of architecture and design for more than a half century. Responding to the needs of the design and architectural communities, Mecho invented revolutionary new product lines ultimately creating a new industry.

Mecho thrives in hard-to-solve design and technical challenges. We embrace “the unbreakable spec”—those unique projects that call for the shading of non-rectangular, sloping, high, wide, monumental, difficult-to-access, and other non-standard windows.

Our product line today includes the original manual Mecho, the motorized ElectroShade®, and innovative solutions such as cutting-edge daylighting and shade-control solutions such as SolarTrac® and SunDialer®.

Mecho’s intelligent WindowManagement® system applies advanced science to important sustainability goals. The manual Mecho®/5 with eco-friendly EcoVeil® shade cloth has been recognized as Cradle to Cradle Certified™ Bronze products by the Cradle to Cradle Products Innovation Institute.

EcoVeil®, and our time-tested ThermoVeil® sunscreen, are some of the more than 300 textiles now offered in a range of densities, weaves, openesses, and colors to satisfy the unique demands of various curtain-wall applications, glass types, geographical orientations, locations, and aesthetics.

Mecho’s products have earned dozens of awards, are specified by the world’s leading architects and designers, and are recognized today as “best in class” by a new generation of creatives and builders.



The Clark Art Institute / Williamstown, MA  
Photo / Carlos Rivera



(718) 729-2020

[mechoshade.com](http://mechoshade.com)